



Decision Aids for Prostate Cancer in Minority Men A191402

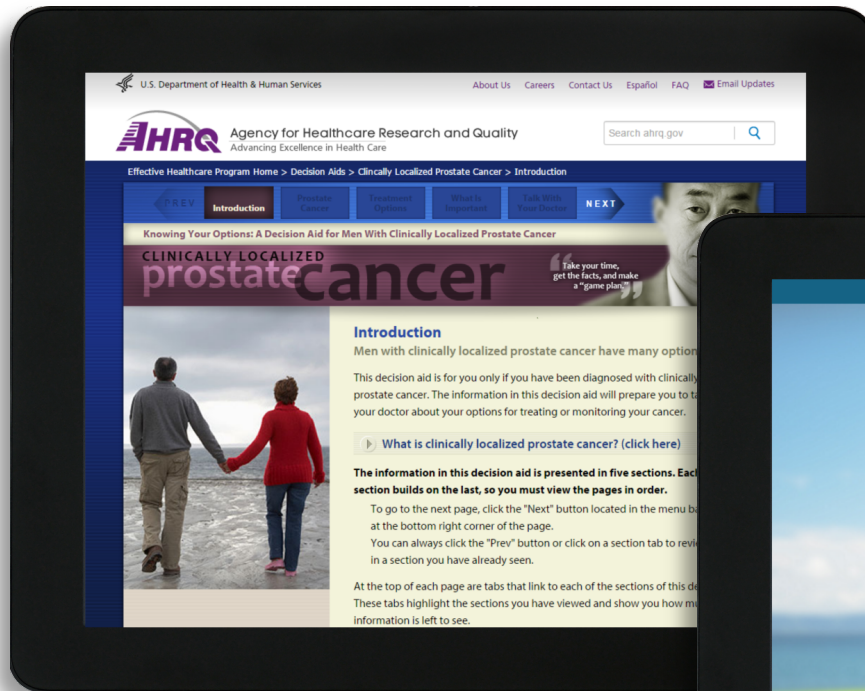
Jon Tilburt, MD
Rochester, MN

May 5, 2016

Team Effort

- Alliance Team – Disparities, Outcomes, CCDR
- Advocate Advisory Team
- Scientific Advisory Team

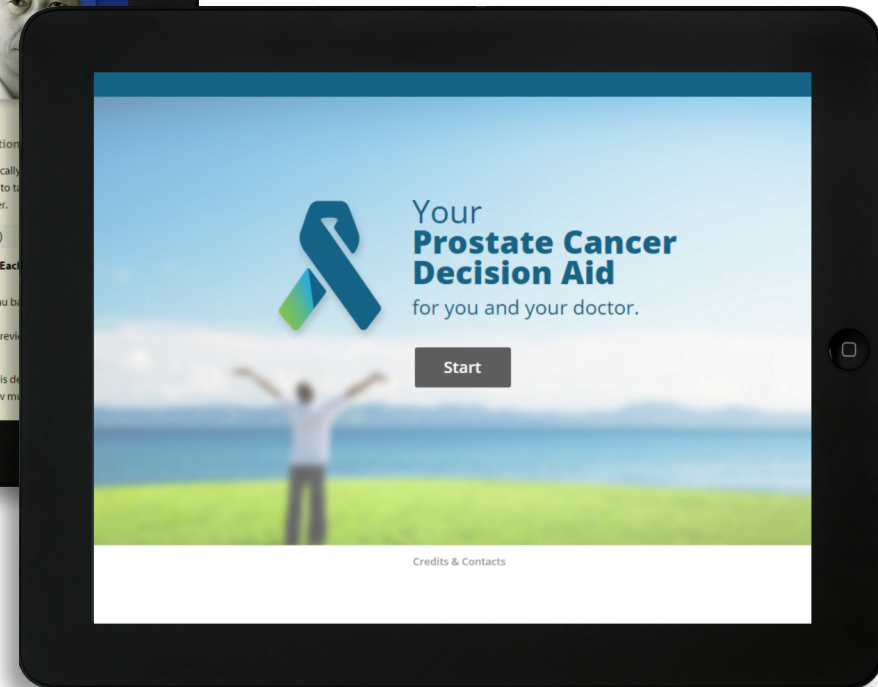
Decision Aids



Knowing Your Options-delivered (before consultation)



Prostate Choice (in consultation)



Aim

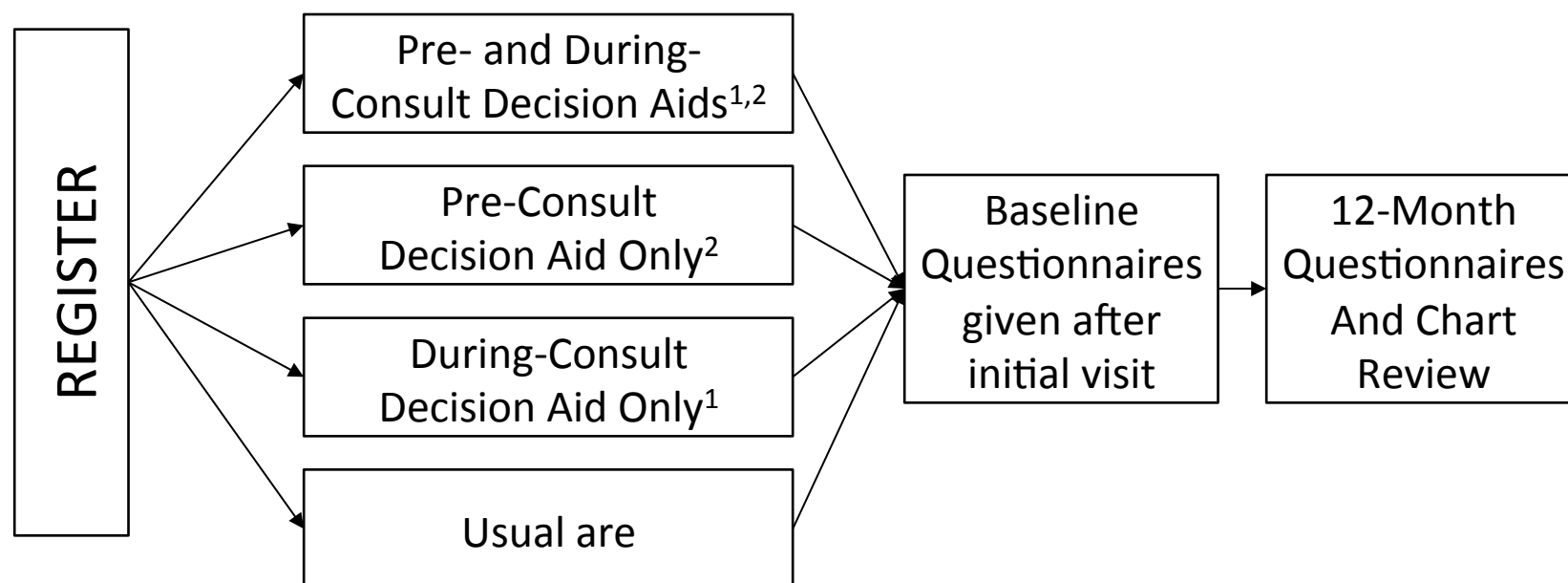
To test the impact of two different decision aids alone and in combination on patient knowledge and 1 year quality of life compared to usual care

Design

- 4 arm
- Cluster-randomized trial in urology practices
- Newly diagnosed men
- Oversample minority men
- 20+ sites

Randomization

*Randomized
by institution*



1 “Prostate Choice”

2 “Knowing Your Options”

Progress to date

- 2012- 1st Presented to Disparities
- 2013- Applied for extramural funding
- 2013- Concept endorsement by Disparities, Outcomes, GU (+GU surgery)
- 2014- Awarded extramural funding (NIMHD R01)
- 2015- CCCR endorsement, protocol being drafted, sites being recruited.
- 2016- Protocol prepared and submitted

Next steps

- NCI review and approval
- Site recruitment
- Accrual starting in fall

Site criteria

- CCDR/NCORP Site
- Urology practice affiliated, willing
- Ability to recruit disproportionate # of minority men
- Patient population
 - Localized disease, English speaking or translator available
 - ½ of slots for minority men
 - See at least 15+ minority men per year in practice

Site criteria

- 18 month accrual (approach ~22 men, 11 minority)
- Goal: 10 men enroll in trial, 5 minority. (AA/AI/HL)
- Ability to accrue AA or AI
- Dedicated slots for HL at all sites
- 1yr follow up QOL

Sites expressing interest

- Bay Area Tumor Institute NCORP (Oakland, CA)
- Heartland Cancer Research NCORP (Decatur, IL)
- Saint Joseph Mercy Hospital (Ann Arbor, MI)
- William Beaumont Hospital (Troy, MI)
- Sanford Clinic North (Bemidji, MN)
- Metro-Minnesota (Saint Louis Park, MN)
- Montana Cancer Consortium NCORP (Billings, MT)
- Sanford Bismarck Medical Center (Bismarck, ND)

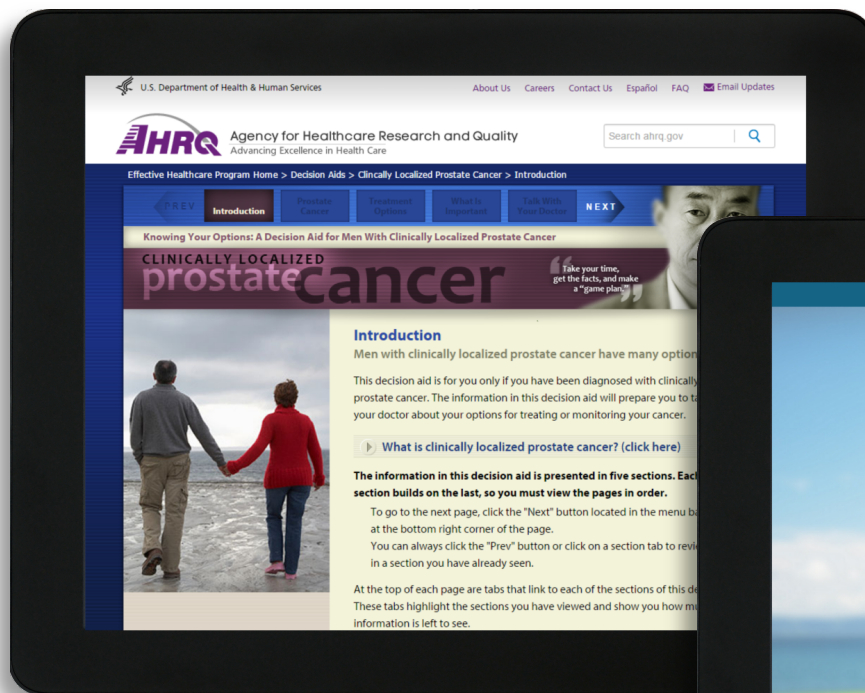
Sites expressing interest

- Sanford Clinic North (Fargo, ND)
- Sanford Medical Center (Fargo, ND)
- Sanford Roger Maris Cancer Center (Fargo, ND)
- Lovelace Medical Center (Albuquerque, NM)
- Presbyterian Kaseman Hospital (Albuquerque, NM)
- University of New Mexico (Albuquerque, NM)
- Memorial Medical Center (Las Cruces, NM)
- Christus St Vincent Regional Ca Center (Santa Fe, NM)

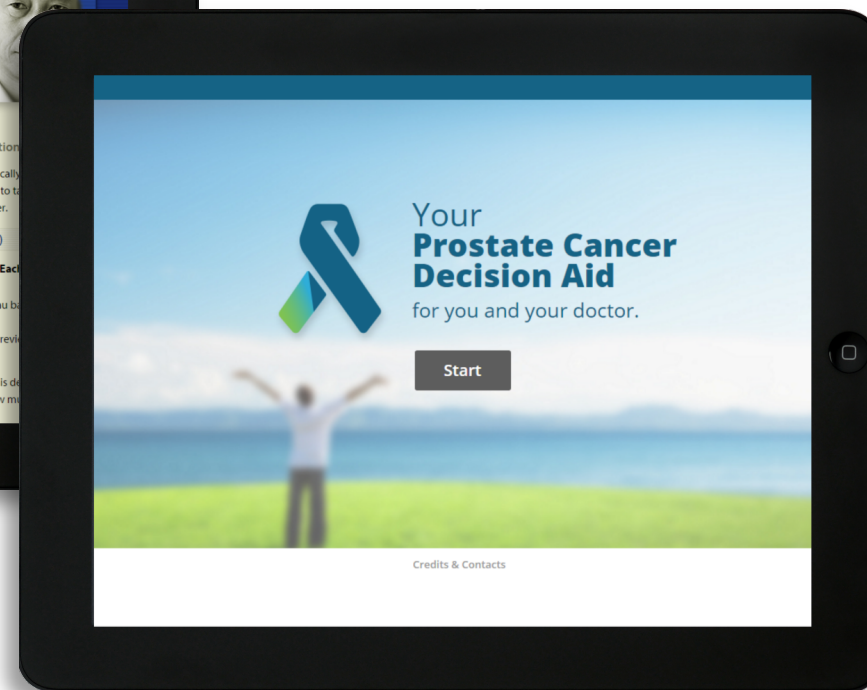
Sites expressing interest

- NV Cancer Research Found. NCORP (Las Vegas, NV)
- Montefiore Minority Underserved NCORP (Bronx, NY)
- Rapid City Regional Hospital (Rapid City, SD)
- Sanford Cancer Center Onc Clinic (Sioux Falls, SD)
- Sanford NCI Community Oncology Research Program of the North Central Plains (Sioux Falls, SD)
- Sanford USD Medical Center (Sioux Falls, SD)
- Virginia Commonwealth University/Massey Cancer Center (Richmond, VA)

Decision Aids



Knowing Your Options



Prostate Choice

Conclusion

- Questions from Audience
- Answers from Presenter

Thank You

tilburt.jon@mayo.edu

